



Edmond and Lucy

Directed by François Narboux



**Unifrance
TV Export
Awards**

**BEST TV EXPORT
AWARD 2023**
ANIMATION
CATEGORY



Edmond and Lucy

MY CHILDHOOD IN THE WOODS

96x12' + 4 Season Specials (4x22')

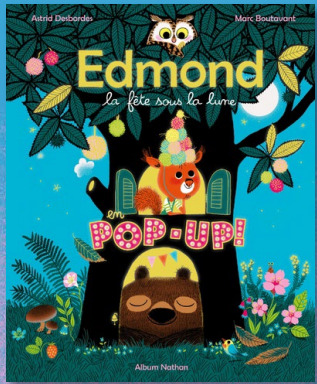
Preschool (3-6) – Gender-neutral

Edmond, the squirrel, and his sister Lucy, the bear cub, live together in a majestic chestnut tree in the middle of the woods. Being siblings isn't always easy! Surrounded by their blended family and crew of friends, they grow up and share their daily life to the rhythm of the four seasons, in the forest, their favorite playground!

[Watch the teaser!](#)



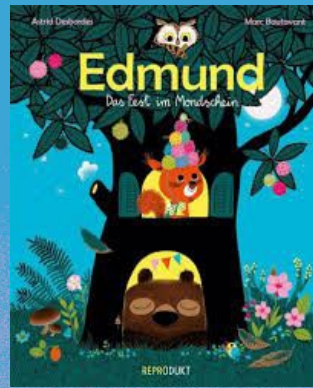
EDMOND AND LUCY / AN INTERNATIONAL PUBLISHING SUCCESS



France, Belgium,
Switzerland



China



Germany



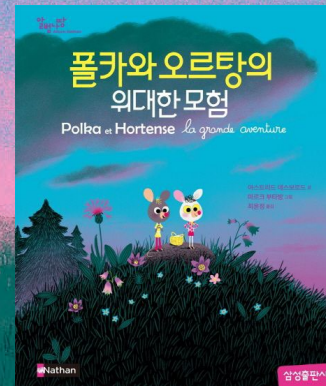
Norway

Based on a collection of children books “*Edmond and Friends*”, by Marc Boutavant (*Mouk*, *Ariol*, etc.)

The books were translated in 15 languages, published in more than 20 countries.



Poland



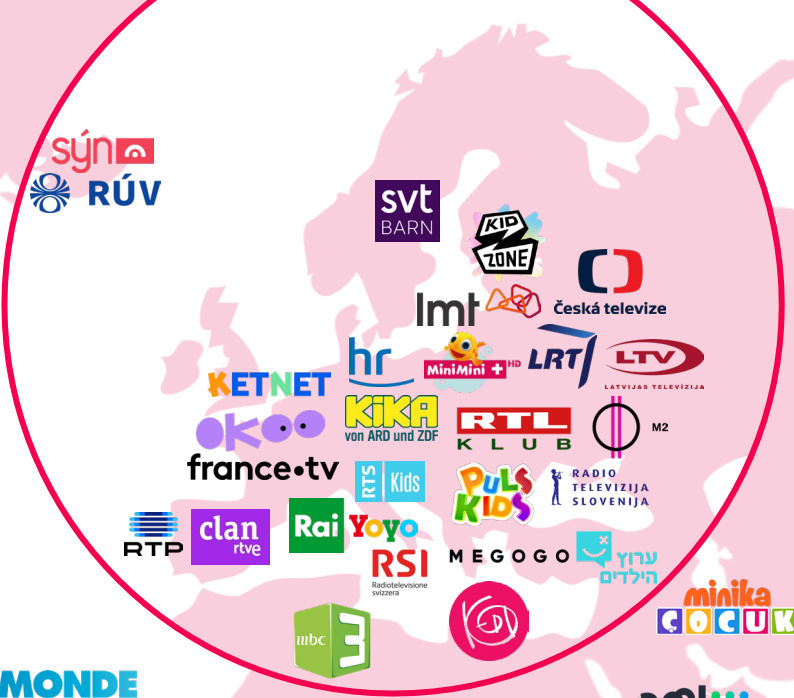
Korea



Spain



4 novelized new albums
released in 2024 by Nathan



Unifrance
TV Export
Awards

BEST TV EXPORT AWARD
ANIMATION CATEGORY
FOR *EDMOND AND LUCY*

SEASON 1
+40 BROADCASTERS
ALL OVER THE WORLD

EDMOND AND LUCY / FESTIVAL TRACK RECORDS



PRIX JEUNESSE
INTERNATIONAL
FINALIST
2024



JAPAN PRIZE



IAFF ANIMATOR
OFFICIAL SELECTION
International Series Competition



OFFICIAL SELECTION
ANNEXY
2023
COMPETITION



OFFICIAL SELECTION
NENAGH
CHILDREN'S
FILM FESTIVAL
2023



OFFICIAL SELECTION
PSAROLOCO INTERNATIONAL
CHILDREN'S & YOUNG
PEOPLE'S FILM FESTIVALS
2023



OFFICIAL SELECTION
Los Angeles
International
Children's Film
Festival



OFFICIAL SELECTION
Providence
Children's Film
Festival
2023



SIGGRAPH ASIA
Computer Animation Festival
Electronic Theater
2022



Official Selection
Courant 3D
IA Competition



OFFICIAL SELECTION
ANIMASYROS
International
Animation Festival
2022



anibar
Official Selection
2022



SÉLECTION
OFFICIELLE
FESTIVAL
NATIONAL
DU FILM
D'ANIMATION
2022





Edmond and Lucy

SEASON 1 (52x12')

Available now

Premiered on

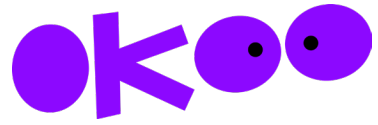


in 2022

[All screeners here](#)



FRENCH RANKING



(digital)

**OVER
2,2M VIEWS**

since launch

**11K VIEWS
PER WEEK**

averaging in 2025

france•tv

(linear on France 5)

In 2022 :

**PEAK AUDIENCE
SHARE OF 22%**

average of 11.4% among
4-10 year-olds

In 2023 :

**AVERAGE
AUDIENCE
SHARE TO 13%**



GLOBAL RANKING IN 2025



4th **MOST WATCHED SERIES**
among 41 series broadcast
in the morning

124,2K VIEWED HOURS
(between 06/01/2025 and 21/02/2025)



5th **MOST WATCHED SERIES**
among 57 series broadcast
in the afternoon

492,9K VIEWED HOURS
(between 01/01/2025 and 30/03/2025)

Source Kika: Glance / AGF / Live + Vosdal + 3 days
Source Rai: Glance / Auditel / Nielsen / Live + Vosdal + 7 days





Edmond and Lucy

THE IPS AND ITS ECOSYSTEM



THE IP AND ITS ECOSYSTEM

Edmond and Lucy



EDMOND AND LUCY+

EDUCATIONAL
EPISODES

SEASON 1 (13 x 3')
Broadcast since July 2023

Lumni



CPF

FEATURE FILM (45') **EDMOND AND LUCY WONDERFUL WINTER**

A compilation of four Season 1 episodes,
reformatted in Cinemascope, with 3
minutes of exclusive new animation

Released on November 8, 2023
Over 135K admissions!



3 VIDEO GAMES

For PC, Android and
WebGL



BOOKS AND MAGAZINES



THE SERIES

SEASON 1 (52 x 12')
Broadcast since September 2022
on 150+ territories

PODCASTS

10 x 7'
SEASON 1 (5 x 7')
Released in July 2023
SEASON 2 (5 x 7')
Released in April 2025



okoo

UPCOMING HIGHLIGHTS – 2026/2027

Edmond and Lucy



EDMOND AND LUCY+

EDUCATIONAL
EPISODES

SEASON 2 (13 x 3')

In production
Delivery Q1 2027

Lumni



1 VIDEO GAME

Platformer 2D for PC and Android

In production
Delivery Q4 2026



EDMOND AND LUCY' SUNNY DAYS!

In production
Launched in France on
March 25th 2026

THE SERIES

SEASON 2 (44 x 11' + 4 x 22')

In production
Delivery between Q4 2026 and Q3 2027

PODCASTS

SEASON 3 (10 x 7')

In production
Delivery Q2 2026



Edmond and Lucy+

Edmond and Lucy+ is a collection of short educational videos that explore the nature facts introduced in the Edmond and Lucy series.

With their pop-up book and the explanations of Edmond's dad, Harry, our young heroes explore the wonders of nature, discovering how animals and plants live, grow, and interact within the forest ecosystem.

Season 1 (13x3') launched on **Lumni** France Télévisions' educational platform, on **July 2023**

Season 2 (13x3') is in production, with a delivery estimated in Q1 2027

SOLD IN +20 COUNTRIES



EDMOND AND LUCY'S WONDERFUL WINTER (45')

A successful theatrical release in France
Available

*Theatrical release: november 2023,
programmed in +200 movie theaters across France*

+135 000 admissions!

Edmond and Lucy's Wonderful Winter is a compilation of **4 winter episodes** from season 1 recalculated in cinemascope format:

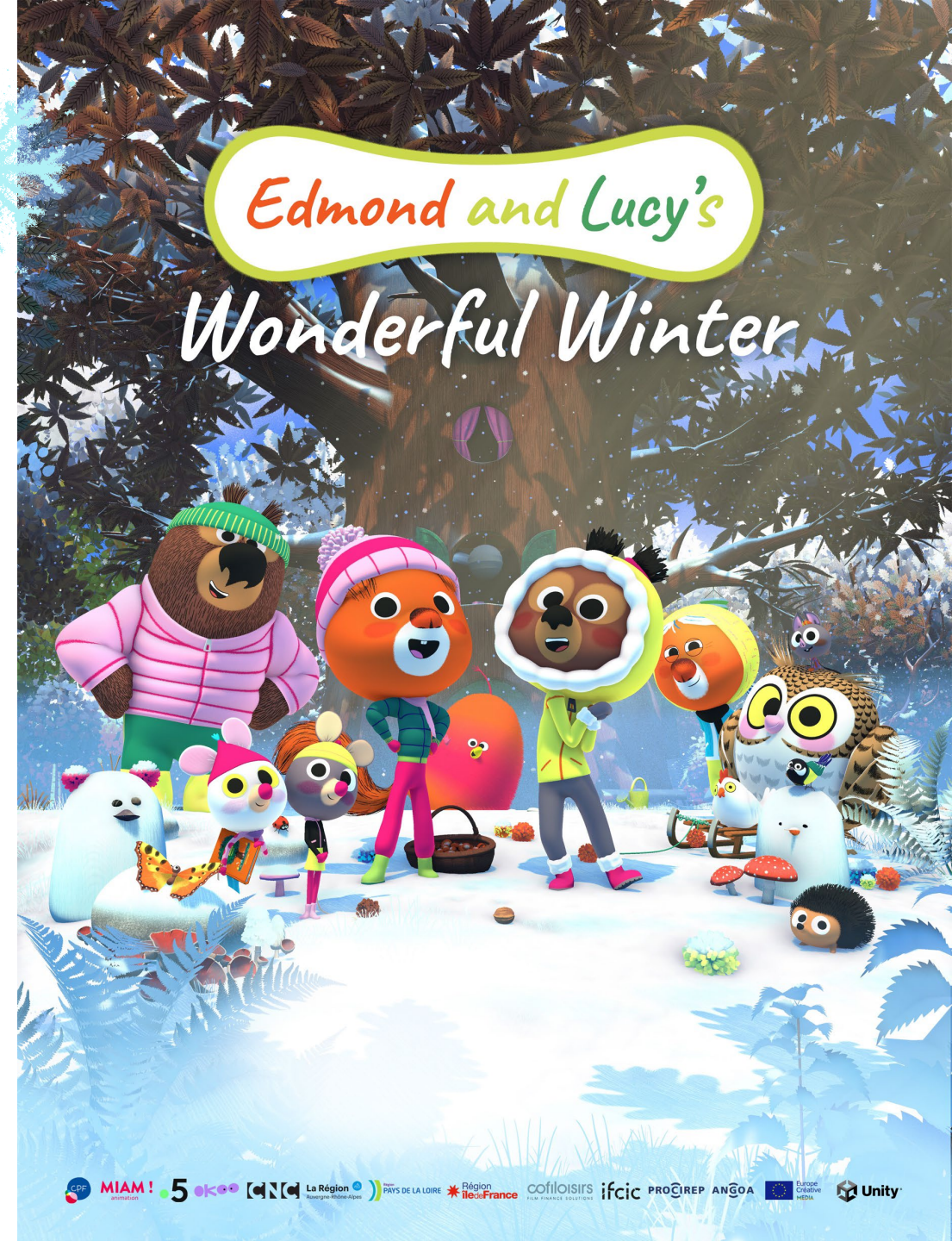
- *The Winter Surprise*
- *The Shortest Day of the Year*
- *Hunting for Surprises*
- *The Winter Army*

With **exclusive additional 3' video content** to tie these episodes together.

Sold in **+20 countries**



TEASER





EDMOND AND LUCY'S SUNNY DAYS (45')

A new movie release in France

Theatrical release: 25th March 2026

Available in February!

Collection of 4 spring and summer episodes from season 1:

- The Best Day Ever
- The Music of Nature
- The Finch's Song
- The Oldest Memories

The program will showcase **exclusive images** as transitions between the episodes, **adapted to a cinemascope format**.





NATURE WORKSHOPS

Inspired by the series, we've developed workshops:

- Aligned with the **4 seasons**: *Summer, Autumn, Winter, Spring*
- Adapted to **different ecosystems**: *Garden, Forest, Mountain, Indoor activities ...*

Our concept: children **watch an episode** from the series and join a **themed creative workshop** connected to the episode's world:

- Making a tree memory game
- Creating musical instruments from natural materials
- Crafting animals using leaves, twigs, and more
- Writing their own forest adventure stories

Our goal: By creating with natural materials, **children discover and connect to the natural world.**

With ready-to-use kit !



In production

Available Q4 2026

2D Platformer videogame

Upcoming launch (PC and Android)

5+

Step into the role of The Thing and dive in Edmond and Lucy's world in the heart of the forest!

Your mission: roam around 14 different environments from the show. Observe, feel, marvel, and collect the 52 vignettes, one for each episode of the series.

Watch the teaser!



EDMOND AND LUCY / 3 WEBGL GAMES

Available

Play 3 fun and didactic games with your favourite characters!

The Season Game: discover the rhythm of day and night, of the seasons, and everything that changes for your friends in the chestnut tree!

The Animal Sounds Quiz: have fun learning the sound of each animal and bird in the forest – make sure you pay close attention!

The Piano Game: do you like the series' theme song? You can learn to play your favourite parts thanks to Edmond's pompoms!

Discover the games!



20 x 7'



Edmond and Lucy Podcasts

10 x 7' Available

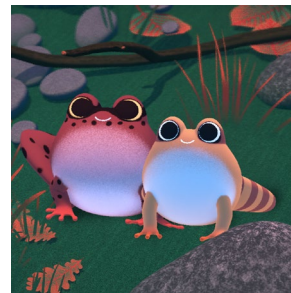
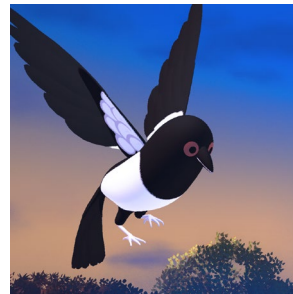
10x7' Delivery Q4 2026



In these twenty immersive sound walks, Harry, Edmond, and Lucy, go out at dusk to learn about animals in the forest and their nocturnal habits.

Nearly **210 000 streams**
since launch in July 2023

NEW EPISODES



Episode *The Deer's Bleat*







Edmond and Lucy

Season 2

Edmond



Lucy



Harry



Mima



Mitzi



Georgie Hoot

Harriet
& Polka

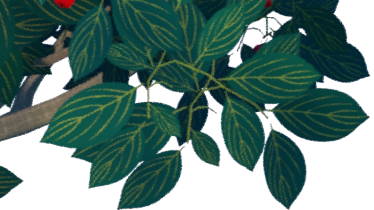


The Thing



Following the success of the first season,
a second season is on its way!

Let's follow Edmond, Lucy and the
whole Chestnut tree community!



While in **season 1**, the children discovered that the forest is an amazing playground, **season 2** turns the spotlight on our **two heroes**, Edmond and Lucy:

How do I grow up and find my place within the family when my sibling is so different from me?





“Wait... I’m not sure... All right then”

Edmond is **careful!** And... **shy!** What he doesn’t know makes him a bit nervous. He’s **meticulous** and organized. **He needs to feel in control of the situation and to take the time to do things at his own pace. To Lucy, he’s just sloooooow. And that’s not too far from the truth!**

Edmond is a **dreamer...** He **observes the forest around him**, collects everything that nature has to offer, **tells himself stories** and makes the most of every moment. In the evening, before going to bed, he remembers all the lovely time he spent in the forest with his loved ones.

Edmond has learnt a lot from his walks in the forest with Mima, and from taking the time to look around. He has a good sense of direction, can tie knots, and knows stones and some plants by name. He can even knit pompoms and craft!

He can be naïve, and he is never too sure of what he believes, what he wants or what he knows. He’s often afraid to fail and he can feel left behind by his sister.

But that doesn’t stop Edmond. He will talk back if Lucy says something mean, and **he even stands up to her sometimes!**

A great listener, Edmond knows how to reassure Lucy, who can always count on him... even to help her fix her mistakes!

Because when Edmond’s confident, he’s capable of the best, and he’s the first to be surprised. Lucy isn’t: she knows her brother’s the best! And so is she!



“Come on, let’s play! Like, right now!”

Everything! Right now! However she wants it! Lucy is **hyperactive** with thousands of ideas a minute... and **she goes for it!** Nothing scares her.

Impatient, she wants everything to go her way, and quick! And she reaaaally doesn’t like it when they don’t... That’s so annoying!!

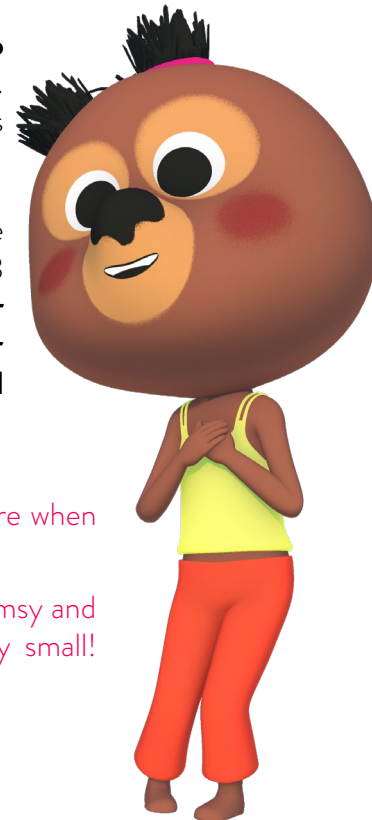
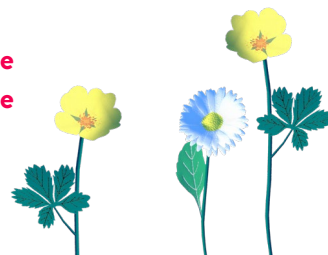
Lucy has an opinion on everything, she sings, dances, plays music... **It’s impossible to forget her when she’s around. She takes a looot of space and makes even more noise! It’s difficult for her to take the time to listen to Edmond, and everyone else in general...** Especially when they disagree with her!

Lucy is a fan of all kinds of competitions. But she’s not too keen on learning... She’d rather have a ready-made solution. That’s perfect: Edmond is always happy to share his knowledge!

She loves to tease her “little brother” (even though they’re “the same age” as Edmond keeps telling her! “Almost! I’m 3 days older, remember?!”). **She often speaks and acts faster than she thinks and, without meaning to, can hurt her brother and her friends. But she immediately feels bad about it and always tries to make things right with them.**

Determined and confident, Lucy quickly loses her composure when things don’t go as planned.

But when she tries to do everything too fast, she can be clumsy and end up breaking things... Which makes her feel very, very small! **Thankfully, Edmond is always around to reassure her!**



SEASON 2

44 x 12' + 4 x 22'

My daily life

Children ages 3 to 6 can relate to Edmond and Lucy's daily life, filled with fun and reassuring routines. The two children share a bedroom, and are raised by Harry, a loving and playful dad, a steady presence at the beginning and end of each episode.

This representation of **a single-parent home** will speak to a large share of our audience.



My life with my brother/sister

The audience identify with sibling stories. How do I grow up and **find my place** within the family and among my friends when my brother or sister is so different from me?

My life in the forest

Imagine growing up in a majestic chestnut tree in the heart of the forest, an **incredible playground** changing to the rhythm of the four seasons!







SEASON 2: LOGLINES

My own room

It's cold outside and the children must stay indoors. But it's a small chestnut tree for Lucy's BIG dose of energy, and after a while, Edmond has had enough. If his sister can't share the space, then he'll just go live with Mima, his grandmother! Alone, finally! But after a while, the siblings start to miss each other... How can they reconcile?



Yummy!

Chicory? Eww! Harry's determined to make the children love his favourite vegetable, but neither Lucy nor Edmond wants to give it a chance. In fact... they'll do anything to avoid it, including sneakily giving their dinner plates to The Thing and pilfering all of Harry's beloved chicory from the garden! But is it really worth all the lies? And most importantly... can the children learn to love chicory, if they give it another try?

Jealous!

Today, Harry suggests that the children go out and collect leaves to make herbariums... so fun! But Edmond's work is much more polished than Lucy's, which looks exactly like the one four-year-old Mitzi made... Green with envy, Lucy throws away all the leaves from her brother's herbarium. But soon, she feels ashamed and runs away into the woods... Will Lucy find the courage to admit her mistake and apologise?



Monster in the Night

It's time for bed! But after listening to Harry's monster story, Edmond is too scared to sleep... What if there really is a monster in the garden? Lucy is not convinced: if there is something out there... then let's go out and see what it is! Can the little squirrel overcome his fear and follow his sister outside?

Like grown-ups

Edmond and Lucy are tired of being children: they want to be grown-ups and do grown-up things, like go to bed late and eat all the pie they want! Well, Harry offers to play a fun game for the day: he will act like a child and them like adults! At first, the siblings are thrilled... until they realize that not even adults get to do whatever they want! Being a child isn't so bad after all, right?

Surprises

Today is Edmond's celebration day, and Lucy has big ambitions: not only will she throw him a surprise party, but she will also build an amazing present... that she made all by herself! But things seem to go from bad to worse: Lucy struggles with building the present and even loses Edmond's favorite gemstone! Can Edmond's celebration still be great... even if it's not perfect?

The starring role

Edmond and Lucy are putting together a show! They have a ton of ideas: it's going to be a great adventure... with a queen! ...and a knight! ...and even a DRAGON! Mitzi is happy to help... and with her wings, she'd be perfect to play the dragon! But the siblings are so focused on their own ideas that they neglect to listen to the little bat... Can they create an amazing play and still be considerate of all their friends?



Autumn



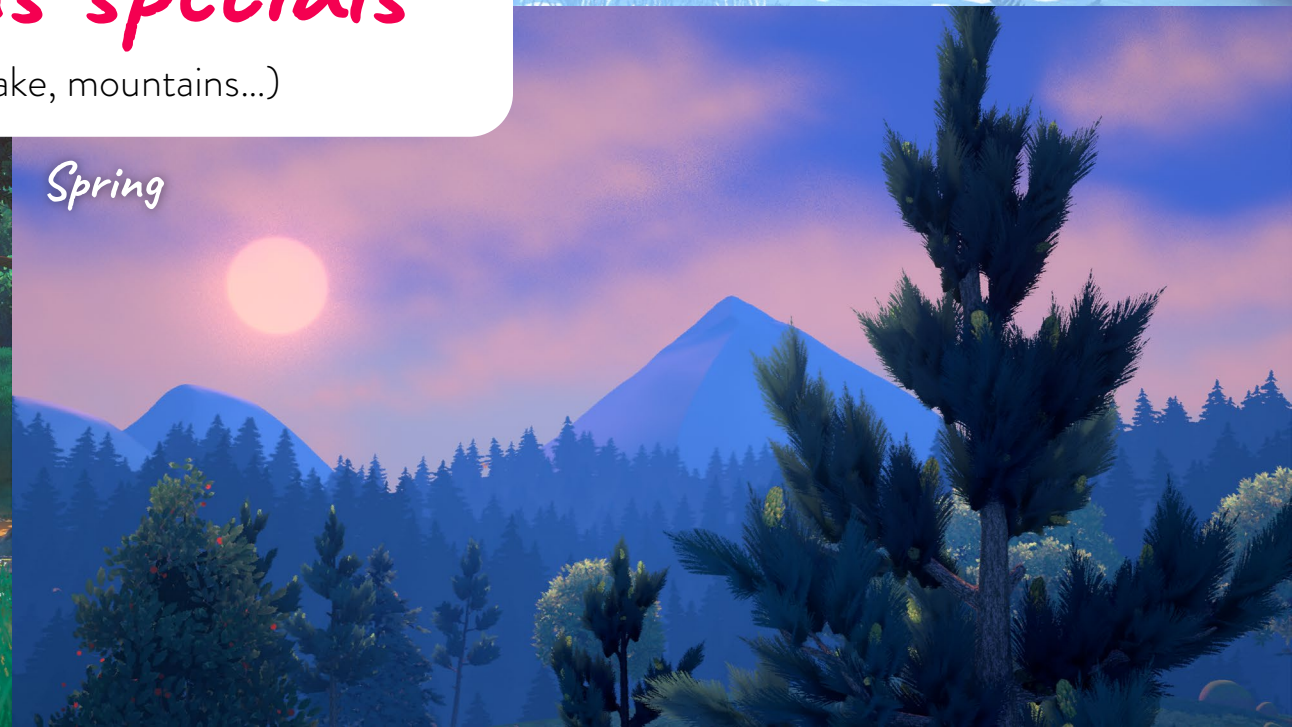
Winter

4 seasons specials

New settings (lake, mountains...)



Summer



Spring

Focus on Winter Special: Merry Christmas! Working title

Yoohoo, today is Christmas Day! Edmond and Lucy are ecstatic, but when it starts to snow, they worry Santa won't find their house... No problem, they'll just build him a landing strip in the garden! Edmond and Lucy gather Harry, Mima and their whole crew of friends to help them! But while the small group is at work, a snowstorm begins to rage and forces everybody to take shelter in a cave. Oh no, they won't be home in time for the gifts. But what if the best Christmas gift of all was to spend it with your favourite people in the world?



SEASON 2 DELIVERY SCHEDULE



December 2026
Episodes 1 à 10
Winter Special



March 2027
Episodes 11 à 25
Spring Special



May 2027
Episodes 26 à 34
Summer Special



September 2027
Episodes 35 à 44
Autumn Special



December 2026
Episodes 1 à 10

April 2027
Episodes 11 à 24
Winter and Spring Special

October 2027
Episodes 25 à 44
Summer and Autumn Special



TECHNICAL SHEET: SEASON 2

Format : 44 x 12' + 4 x 22'
Real Time 3D – Unity

PRODUCER

Hanna Mouchez

DIRECTOR

François Narboux

GRAPHIC BIBLE AUTHOR

Marc Boutavant

LITERARY BIBLE AUTHORS

Astrid Desbordes, François Narboux,
Balthazar Chapuis et Virginie Boda

HEAD WRITERS

Virginie Boda et Nathalie Mars

HEAD OF STORYBOARD

Clémentine Rochet

COMPOSER

Mathias Duplessy

3D STUDIO

MIAM ! Studio

RIG, LAYOUT AND ANIMATION STUDIO

Jungler

POTENTIAL PARTNERS FOR COPRODUCTION



ENGAGED BROADCASTERS



FRENCH DELIVERY SCHEDULE

Episodes 1 to 15 (including Winter Special) :
from November 2026 to December 2026

Episodes 11 to 52 (including 3 other Specials) :
from March 2027 to September 2027



MIAM! animation

SUSTAINABILITY ON SCREEN AND BEHIND THE SCREEN

Sustainable real time CGI pipeline:

- Rendering phase is deleted
- Allowing a massive economy in terms of carbon release.

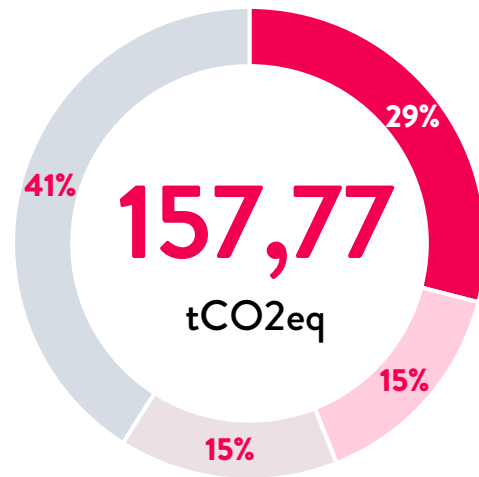
A pipeline used to produce **impactful, meaningful
and sustainable** TV shows for kids & their families!



EDMOND AND LUCY CARBON FOOTPRINT

Edmond and Lucy Season 1, WebGL video games and podcasts has a **carbon footprint 9 times lower** than the industry average**!

Breakdown of carbon footprint*



- Site infrastructure (45,1 tCO₂eq)
- Production (23,9 tCO₂eq)

Season 2 - Provisional carbon footprint soon to be released!

**Data collected using the Carbulator V2 **Ecoprod March 2025*



THANK YOU!

HANNA MOUCHEZ

CEO and
Executive Producer
hanna@miam-animation.com

MÉLANIE ERREA

Head of Sales
and Acquisitions
melanie@miam-animation.com

LUCILLE JANVIER

Sales Manager
lucille@miam-animation.com

The logo for MIAM! animation is contained within a white, stylized cloud shape. The word "MIAM!" is written in a large, bold, black, sans-serif font. Below it, the word "animation" is written in a smaller, black, lowercase, sans-serif font.

MIAM!
animation